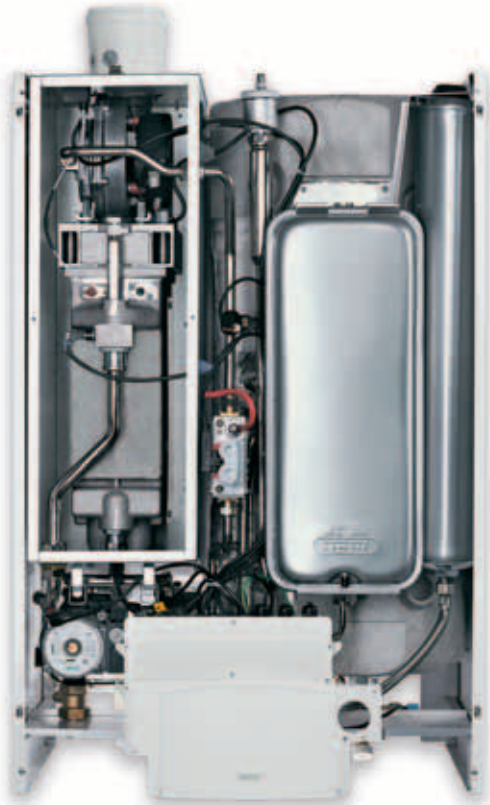


# ALKON 24 - 35 B 60



MODEL ALKON			24 B 60	35 B 60
Nominal min-max output	Condensing	kW	4,6-24,1	5,8-34,6
	Conventional	kW	4,0-22,8	5,0-33,2
Nominal input		kW	23,8	34,5
$\eta$ in Condensation at min. load			106	105,2
Efficiency class (CEE directive 92/42)			★★★★	★★★★

The ALKON 24 B 60 and 35 B 60 boilers complete the "ALKON RANGE" of models. Equipped with a 60 litre capacity stainless steel storage cylinder, the ALKON B 60 are able to respond to the needs of those users who prefer having the largest comfort offered by a "store" of

domestic hot water, always ready and available.

The ALKON B 60 boilers have been developed and constructed with original Unical elements which are based on precise constructive philosophies: unique heat exchanger, advanced electronic controls, reduced servicing, "user friendly" controls and an elegant design.

They provide you with the highest performances in terms of energy exploitation:

- Reduced fuel consumption thanks to condensation and to the excellent modulation ratio 1:5, which reduces the fuel consumption by 30% compared to a conventional boiler.
- Flexible system design: permits the management of 2 heating zones at different temperatures.
- High DHW production: up to 17,7 litres per minute.
- Quieter boiler operation, thanks to the new pre-mixing system.

## Identikit

- 4 stars efficiency class condensing boiler (CEE directive 92/42)
- Exclusive compact cast aluminium/silicon and magnesium heat exchanger
- Pre-mix modulating burner with constant air/gas ratio, Low NOx (Class 5 according to EN 297 and EN 483)
- Stainless steel 60 litre capacity storage cylinder
- Flue ducts over 30 metres long (twin pipe 80/80)
- Approved 60 mm diameter flue ducts available
- Management of 2 heating zones at different temperatures
- Sliding temperature boiler operation
- Priority 3-way diverting valve
- Boiler frost protection
- No-jam pump
- Overrun function
- Chimney-sweeper function
- Multigas boiler operation (with Natural gas or LPG)
- Programmable room thermostat (optional)
- Outdoor sensor (optional)

## The features



Ultra compact boiler body in aluminium alloy (Al/Si/Mg)



A 60 litre stainless steel AISI 316L "ULTRA-FAST" storage cylinder



Premix fan



Extra guarantee

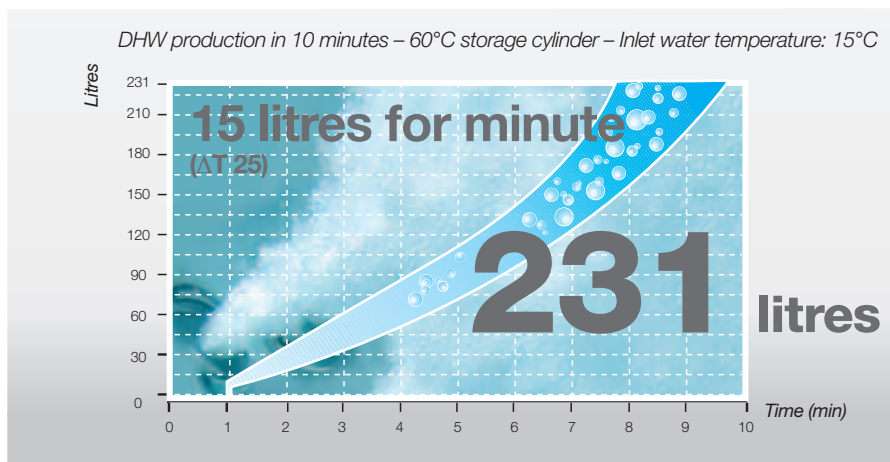
## A new generation of storage cylinders

The new stainless steel AISI 316L storage cylinder offers:

- 60 litre storage capacity.
- DHW flow rate of up to 17,7 litres per minute with  $\Delta t$  25 K temperature rise and up to 231 litres in the first 10 minutes.
- Primary coil length: 10,4 m.
- The coil is placed in 2 concentric spirals in the lower part of the cylinder, in order to favour the maximum heat exchange with the cold water, which is injected by a special deflector which reduces the turbulences in the upper part of the cylinder where the hot water is withdrawn.
- Storage cylinder heating-up time: 10 minutes, guaranteeing correct boiler operation in every situation (simultaneous hot water requests, Jacuzzi, etc).
- Inspection flange with sacrificial magnesium anode.

### The advantages:

- Resistance to corrosion, thanks to the employment of one of the best available metals, particularly indicated for *the high hygienical level* established in the hot water industry for domestic use.



The perfection of the welding seams is guaranteed thanks to the “TIG” (Tungsten Inert Gas) technology.

- *Very high refractoriness* to the lime scale deposits, thanks to the specular surfaces which prevent the lime particles depositing themselves.
- Practically complete heat transfer from the primary circuit.
- *30 mm thick foam polystyrene* insulation.

## Management of 2 heating zones with 2 thermostats!

Siting flexibility is extensive for all types of heating systems, thanks to the electronic microprocessor control system which, as well as controlling boiler operation and having a fault diagnosis program, permits the management of 2 heating zones at different temperatures, controlling them via 2 energy saving, modulating thermostats.

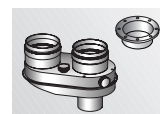
## Technical data and dimensions

ALKON		24 B 60	35 B 60
<b>Output</b>			
OUTPUT RANGE IN CONDENSING MODE	kW	4,6+24,1	5,8+34,6
OUTPUT RANGE IN CONVENTIONAL MODE	kW	4,0+22,8	5,0+33,2
HEAT INPUT	kW	23,8	34,5
<b>Efficiency</b>			
EFFICIENCY CATEGORY (Directive CEE 92/42)		★★★★	★★★★
EFFICIENCY AT FULL LOAD (100%) IN CONDENSING MODE	%	101,10	100,4
EFFICIENCY AT MIN. LOAD IN CONDENSING MODE	%	106	105,2
EFFICIENCY AT NOMINAL LOAD (100%)	%	95,9	96,3
EFFICIENCY AT MIN. LOAD	%	101	93,9
<b>Combustion</b>			
CO <sub>2</sub> (min/max output)	%	9 - 9	9 - 9
NOx (value according to EN 297/A3 and EN 483)	mg/kWh	57,62	34,83
MAX CONDENSATE PRODUCTION	kg/h	4	5,6
NOx Class		5	5
<b>Central Heating</b>			
MIN/MAX OPERATING TEMP. IN CH MODE	°C	30 / 80	30 / 80
DHW ADJUSTABLE TEMPERATURE RANGE	°C	35-65	35-65
DHW PRODUCTION WITH $\Delta t$ 30 K	l/min	15,5	19,3
CH EXPANSION VESSEL CAPACITY	l	7,5	7,5
<b>Electrical supply</b>			
ELECTRICAL SUPPLY - VOLTAGE / FREQUENCY	V/Hz	230/50	230/50
MAXIMUM ABSORBED POWER	W	152	163
<b>Weight And Technical Data</b>			
NET WEIGHT	kg	64	67
ELECTRICAL PROTECTION	IP	X4D	X4D
APPLIANCE GAS CATEGORY		II 2H3P	II 2H3P



### Optional accessories

- Additional kit for twin pipe systems with air inlet flue  $\varnothing$  80 diameter code 00361435



- Additional concentric flue pipe adaptor kit  $\varnothing$  80/125 code 00361334



- DHW expansion kit code KIT0900C